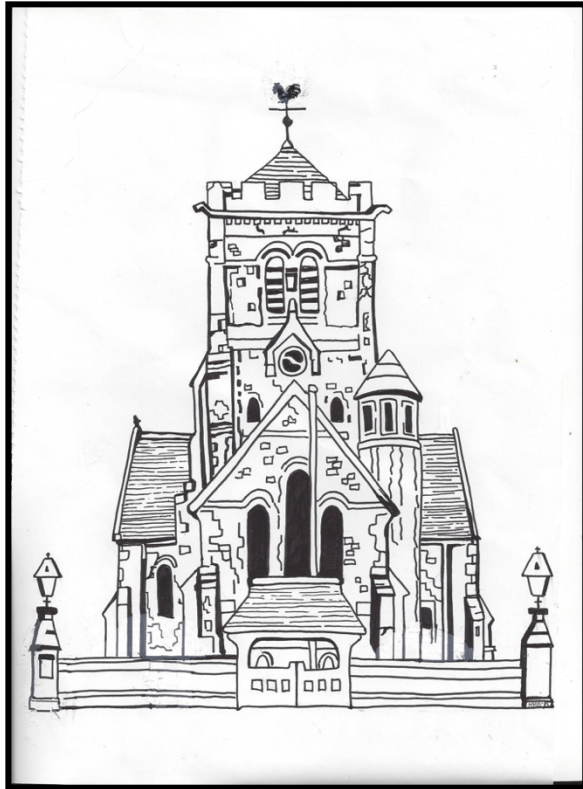


St Giles' and Shipbourne NEWSLETTER



May 2024

OFFICERS OF ST GILES' AND VILLAGE ORGANISATIONS

ST GILES

Rector of Shipbourne with Plaxtol: 811081
 Rev Dr Peter Hayler Email: RectorSwP@gmail.com
 The Rectory, The Street, Plaxtol TN15 0QG http://shipbourne.com/st-giles-church/
 Curate Mr Mark Packer 07970-709006
 Lay Reader Mr P Brewin 810361
 Churchwardens: Ms C Jackson 07729814798
 Mr A Boorman 07795 182966

PAROCHIAL CHURCH COUNCIL

Secretary: Mrs C Chambers 382228
 Treasurer: Mr C Keeling 07825 139046
 Deanery Synod Rep: Mr N Ward 810525

CHURCH OFFICERS

Parish Safeguarding Officers:
 Ms C Jackson 07729814798
 Miss G Coates (children) 811432
 Mr J Young 810289
 Choirmaster: Mrs H Leach 07762 241720
 Electoral Roll: Mrs F Ward 810525
 Flower Guild: Graham Edwards 07487 729549
 Bell Ringing:

SHIPBOURNE PARISH COUNCIL

Parish Clerk: Sarah Huseyin 886402 shipbourneparishcouncil@gmail.com
 Chair: V Redman
 Vice Chair: J Sheldrick
 Councillors: P Leach, S Oram,
 A Dagger, S Davis
 www.shipbourne.com

VILLAGE WEBSITE

SHIPBOURNE SCHOOL

Head: Mrs Terri Daters TDaters@bournepartnership.org

SHIPBOURNE VILLAGE HALL

Chairman: TBC AFTER RESTRUCTURE shipbourne.villagehall@gmail.com

Bookings: Helen Leach 07762 241720

SHIPBOURNE FARMERS' MARKET

Manager: Bob Taylor 833976

SHIPBOURNE WI

President: Barbara Jones 420285 b.jones162@btinternet.com

SHIPBOURNE CRICKET CLUB

Secretary: Mark Fenton

PLAXTOL & SHIPBOURNE TENNIS CLUB

Membership: Cilla Langdon-Down 810338

POLICE

Emergency: 999 Non-urgent: 01622 690690

ST GILES' AND SHIPBOURNE NEWSLETTER

Editor/Adverts: Lindsay Miles 810439 lindsay_miles@btinternet.com
 Copying: Mary Perry 810797

Rector of Shipbourne with Plaxtol
 Rev Dr Peter Hayler
 The Rectory, The Street, Plaxtol TN15 0QG

PARISH DIARY – MAY 2024

Except where indicated below, the main morning service at **ST GILES, SHIPBOURNE** is at 9.30am. Every weekday at 8.00am Morning Prayer will be said at Plaxtol and every weekday evening (except Friday and Saturday) at 4.30pm Evening Prayer will be said at St Giles, Shipbourne.

St Giles Shipbourne is open for organ practice and private prayer daily except Mondays from 9.00am to 3.00pm <http://shipbourne.com/st-giles-church/>

Thursday	2nd	9-11am	Farmers' Market at St Giles, Shipbourne
SUNDAY <i>6th Sunday of Easter</i>	5th	8.00am	Holy Communion at Plaxtol Church
		9.30am	Parish Communion at St Giles, Shipbourne
		11.00am	Family Service with Communion at Plaxtol Church
		Readings:	Acts 10: 44-end; 1 John 5: 1-6; John 15: 9-17
Thursday <i>Ascension Day</i>	9th	8.00am	Holy Communion at Plaxtol Church
		9-11am	Farmers' Market at St Giles, Shipbourne
SUNDAY <i>Sunday after Ascension Day</i>	12th	8.00am	Holy Communion at St Giles, Shipbourne
		10.50am	Matins at St Giles, Shipbourne
		10.50am	Parish Communion at Plaxtol Church
		Readings	Acts 1: 15-17, 21-end; 1 John 5: 9-13; John 17: 6-19
Tuesday	14th	10-11.30am	Plaxtol Playtime at Plaxtol Church (see advert)
Thursday	16th	9-11am	Farmers Market at St Giles, Shipbourne
SUNDAY <i>Pentecost Whit Sunday</i>	19th	8.00am	Holy Communion at Plaxtol Church
		9.30am	Parish Communion at St Giles, Shipbourne
		11am	Community@11 at Plaxtol Church (Refreshments from 10.30am)
		Readings:	Acts 2: 1-21; Romans 8: 22-27; John 15: 26-27, 16: 4b-15
Thursday	23rd	9-11am	Farmers' Market at St Giles, Shipbourne
Saturday	25th	9.30-11am	Community Bread Basket at Plaxtol Church

SUNDAY <i>Trinity Sunday</i>	26th	8.00am	Holy Communion at St Giles, Shipbourne
		9.30am	Family Service at St Giles, Shipbourne
		11am	Parish Communion at Plaxtol Church
		Readings:	Isaiah 6: 1-8; Romans 8: 12-17; John 3: 1-17
Thursday	30th	9-11am	Farmers' Market at St Giles, Shipbourne



Community Bread Basket

9:30 - 11:00 on Saturday 25th May 2024

In Plaxtol Parish Church
Café style Breakfast
All welcome

United Benefice of Shipbourne with Plaxtol
 Collections for Chatham Foodbank
Boxes will be placed in both our churches over the fourth weekend of each month for donations of food and toiletries, to coincide with our Community Bread Basket event.



Wasp Treatment

Taking the sting out of summer

andy.wasp
 Wasp & Wasp nest treatment

Fast, Efficient and Reliable
 Tonbridge & surrounding area
 TN9. TN10. TN11

Mobile: **07833558773**
 Email: andy.wasp@yahoo.co.uk

THE GREAT FIFTY DAYS OF EASTER

HOLY SPIRIT, WE WELCOME YOU!

The month of May brings us through the last of the Great Fifty Days of Easter to Pentecost, at which the Church throughout the world celebrates its birthday through the coming of the Holy Spirit.



At the Baptism of Jesus, those present witnessed the sky being 'torn apart' and the Holy Spirit descending 'in bodily form like a dove'. Note that the word 'like' in this phrase indicates a simile. The language of this witness in scripture is tricky because we reason that 'body' is that which we can see and touch, and 'spirit' is that which we sense and believe to be true in other ways, but that we can neither see nor touch. We will be following the readings that share Jesus' teaching about the coming Holy Spirit and praying for more of God's power and presence in our lives, addressing our prayers directly to the Holy Spirit. Likewise, our prayers for all our Confirmation candidates (4 adults and 3 young people – July 14th) is for the deep indwelling and empowerment of God in their lives through the person of the Holy Spirit:

*Move among us with holy fire as we lay aside all earthly desire;
hands reach out and our hearts aspire. Holy Spirit we welcome you!
Let the breeze of your Spirit blow that your children here my fully
know
how to move in the Spirit's flow. Holy Spirit we welcome you!
Please accomplish in us today some new work of living grace, we
pray;
unreservedly have your way. Holy Spirit we welcome you!*

Peter Hayler, Rector

VOCE SACRI SUMMER RECITAL AT ST MARY'S HADLOW 22ND JUNE AT 6.30PM

Voce Sacri, the smaller arm of the Plaxtol Scholars, are giving a recital in St Mary's Hadlow on Saturday 22nd June. Bar available from 6pm: concert 6.30pm - 8pm including a short interval.

Celebrating a golden era of late 19th century English music including works by Stanford, Bridge, Vaughan Williams and Parry. Free entry, retiring collection.

Further info from Marius Carboni:
mcmarius5@gmail.com: 07885 753272

PLAXTOL PLAYTIME

**A group for Babies, Toddlers, Pre-schoolers and
their parents, grandparents and carers
Meeting in Plaxtol Church on the 2nd Tuesday of the
month
Join us for a coffee/tea - some play activities and to
meet
other local parents, carers and little ones in the
community
£2.00 per family
Next meeting -14th May 2024
In Plaxtol Church from 10.00 to 11.30**

SHIPBOURNE WI

The London Walk on 22nd March was much enjoyed by members. We met our guide Stuart Robinson outside St Clement Danes Church from where we walked along Fleet Street, stopping at various points of interest on our way. The walk culminated at Temple Church and the Inns of Court, and then we had lunch at The Courtauld Gallery, before our return journey.

A second London Walk around Blackfriars is planned for the autumn, in addition to a visit to the V&A in June.

The speaker for our monthly meeting was unable to come, so we didn't rattle any family history bones after all! Instead we were delighted to welcome Dale Thomas, who set up a fascinating quiz, using her own collection of artifacts and treasures. Although our recognition of the objects was patchy we learned a great deal, and were grateful to Dale for entertaining us so well.

The Book Club book this month is "Mrs Harris Goes to Paris", by Paul Gallico. Paris is not yet on our travel plan, but you never know!

Back in our own beautiful countryside, a walk is planned on 18th April from Plaxtol to Ightham Mote, in order for us to enjoy the abundance of wild flowers in our locality.

The next meeting is on Wednesday 8th May, when it is also our AGM.

Glynis Coates

HELP NEEDED FOR THE MAGPIE CENTRE, CHATHAM

We are committed to helping the Magpie Centre connected to our link parish – All Saint's Church, Chatham. They need the following:

Small kitchen equipment including:

- Settings for 4 people – plates and cutlery etc.
- Small pots and pans

Clothes, towels and curtains

**Collection points will be in both churches
on the 4th Saturday of each month**

Thank you for your support

Any queries ring Carol Crossley on 810801



As part of the St Giles' Church Fundraising Appeal, Shipbourne will be hosting informal "Open Gardens" (not linked to the National Open Garden Scheme) on **Saturday 22nd June 2024**. Residents are invited to open their gardens for others to view with a purchased ticket giving entry to all gardens. Teas and cakes will be available to purchase in the Village Hall during the afternoon.

Thank you to residents who have offered to open their gardens. We still need a few more so if you are within walking distance to the "Shipbourne Block" and would like your garden to be included – whether large, small, a few pots, a courtyard, just a space you are proud of - please email lindsay_miles@btinternet.com or call on 01732 810439.

Gardens will be open from **1pm-5pm** and tea and cakes will be available to buy in the Village Hall from 1pm. The "teas team" will be grateful for any **homemade cakes and biscuits** and these can be taken to the Village Hall from 11am on the day.

Tickets (£5 per person) and maps will be available to purchase in advance at the Farmers' Market and on the day from the Village Hall and from the gardens. Further details will follow in next month's Newsletter.

SHIPBOURNE PARISH COUNCIL

The contact details for the Parish Council are:

Shipbourne Parish Council
Clerk – Mrs Sarah Huseyin
Gable Cottage
Ismays Road
Ightham TN15 9BE
e-mail: shipbourneparishcouncil@gmail.com
Telephone: 01732 886402

Please visit the website for Shipbourne Parish Council Meeting Agenda's, Minutes and News. (<http://www.shipbourne.com/>) If you have any ideas or would like something added, such as a news item, please email the Parish Clerk.

The Parish Council meetings *usually* take place on the second Monday of each month (except August) at 7pm and the agenda will be posted a few days beforehand on the noticeboard in the bus shelter opposite The Chaser and on the Parish website. If you have anything that you would like to raise or would like to join the meeting, please email the Parish Clerk shipbourneparishcouncil@gmail.com. Please visit our website **www.shipbourne.com** for further details.

Our next meeting will be on Monday 13th May 2024 at 7pm which will be our Annual Meeting and AGM.

We currently have a vacancy, if you are interested in becoming a Councillor, please contact the Parish Clerk

PLANNING APPLICATIONS

<https://www.tmbc.gov.uk/planning-applications-appeals/planning-view-comment-planning-applications>
TMBC has just launched a new planning portal and planning applications are now sent to us when they are validated rather than via a weekly list. If you would like to receive planning applications for Shipbourne, please sign up to alerts on the TMBC website.

COMMUNITY SPEEDWATCH

If you are interested in setting up a Community Speedwatch Group, please contact shipboueparishcouncil@gmail.com

ANNUAL PARISH MEETING

Our Annual Parish Meeting will be held at Shipbourne Village Hall on Monday 13th May 2024 at 7pm-7.30pm. All welcome!

CASP NEWS

Climate Action Shipbourne & Plaxtol New Technology To Replace Dependence On Oil....So Many Questions

Ground Source, Air source, Electric boilers, Infra-red, PV Panels, Insulation, Smart meters, types of Hot Water Tanks, Batteries! So much new technology! What is best for my home, my pocket?

Which is most reliable and efficacious?

Information on the best technology and heat source for replacing our oil boilers is becoming a real challenge for many of us in Shipbourne and Plaxtol. CASP are investigating the existing and emerging methods of heating our homes and will be running a workshop over the summer for our community to learn from the experts just what our options are.

The event will be held in Plaxtol Village Hall, and we hope will be attended by everyone! The high costs of oil and electricity affects us all, and whilst there is a pressing need to replace our aging boilers there is also a government grant to help us do this, so the time is right for us all to think about it. If we work together as a community, we will also be able to cut costs and make better informed decisions.

WATCH OUT FOR THE INVITATION TO THE EVENT IN THE NEXT NEWSLETTER, LEAFLETS AND POSTERS!

WELCOME TO MY COMMUNITY VOICE

My Community Voice is a messaging service that helps Kent and Medway residents, businesses, and community groups to keep in touch with their local policing teams. The service sends updates about your local area directly from the police officers themselves.

My Community Voice is more than just a messaging service; it allows you to reply to the alerts we send you, share information and tell us about the issues affecting you.

We are committed to engaging with communities to increase trust and confidence and to help protect people from harm. Police, partners and the public working together can build resilient and safe communities, and both reduce and prevent crime.

You will be able to play an active part in police appeals as well as keeping updated in what is happening in your local area.

Sign up: www.MyCommunityVoiceKent.co.uk



Thursday 2 May	A leisurely, flat and rural circular walk from Hadlow towards the River Medway and East Lock, going through Barnes Street and Golden Green. Good views of Hadlow Tower and two pillar boxes near the Medway. Three stiles. Mainly field paths, very little road walking, good paths and tracks. May be muddy after rain.	4.5 miles
Thursday 9 May	Trosley Trot: a fairly flat circular walk along the bottom of the Downs with good views to the south. Moderate difficulty.	5.5 miles
Sunday 12 May	A varied circular walk from Groombridge through the woods to Harrison's Rocks, across the Spa Valley railway (Toot! Toot!) and returning via Motts Mill. Moderate difficulty.	5.5 miles
Thursday 16 May	West Peckham wander: pleasant circular walk past the church across the village cricket field and around back to The Swan on the Green. Moderate difficulty.	5 miles
Thursday 23 May	Darent Valley circular walk from Shoreham village. Moderate difficulty.	5 miles
Wednesday 29 May	Circular walk from Mereworth through an attractive part of the Wealdway, climbing through Hurst Wood and returning via West Peckham. We then climb to the top of the Wealden ridge before the return to Mereworth. Moderate difficulty.	6 miles

REPAIR CAFE Tonbridge



BRING YOUR BROKEN HOUSEHOLD ITEMS TO THE CAFE where we will be repairing broken items together, giving professional advice and inspiring you to learn new skills

REPAIRS OFFERED:

Electrical : Electronics : Mechanical : Wood : Toys :
China repair : Clothing : Textiles :
Knife & Scissor sharpening

Saturday 13 April

Saturday 11 May

Saturday 8 June

Saturday 13 July

10am - 12:30pm



Last repair accepted at 12:00pm or when capacity has been reached

FREE Voluntary contribution welcome

ENJOY Refreshments at the St Stephen's Cafe

St Stephen's Church
Waterloo Road, Tonbridge TN9 2SW



tonbridgerepaircafe.uk FB: [@tonbridgerepaircafe](https://www.facebook.com/tonbridgerepaircafe) IG: [@tonbridgerepaircafe](https://www.instagram.com/tonbridgerepaircafe)
Email: tonbridgerepaircafe@gmail.com Tel: 07470 141035

Sevenoaks Climate Hero

Do your kids educate their teachers on the climate crisis?

Is your granny a dab hand with a litter-picker?

Has your business walked the extra mile to cut its carbon footprint?



Then Sevenoaks Climate Action wants to hear from you!

We want to champion the local unsung climate heroes taking grassroots action to save the planet.

Anything goes - as long as it is aimed at tackling the climate emergency or mitigating ecological disaster. Even better if it brings local people together.

Please email sevenoaksclimatefair@gmail.com

Tell us the name, age, and story of your nominee in no more than 200 words. We'd love a photograph too.

The winners will be announced at the S CAN Climate Fair on **Saturday May 4th on the Vine Gardens from 10.30am-4pm.**



INFORMATION FROM NATIONAL HIGHWAYS

National Emergency Area Retrofit - work is set to begin on the M25 and surrounding motorways in the next few weeks.

We are delivering a government commitment to add more than 150 more emergency areas to motorways across the country including several sections of the M25 and surrounding motorways.

Work to install additional emergency areas is already taking place along the M1 corridor from junction 16 up to junction 35a.

The programme of work in the south will start from 25 April 2024 and all sections are expected to be open by the end of March 2025. I am writing to give you an overview of what this means for the strategic road network.

In the South East over the coming months work will start on:

- M25 between junctions 5 (Sevenoaks) and 7 (Redhill), due to start from 25 April 2024.
- M25 between junctions 23 (South Mimms) and 27 (Epping), due to start from 25 April 2024.
- M3 between junctions 2 (Thorpe) and 4a (Farnborough), due to start from 29 April 2024.
- M4 between junctions 10 (Wokingham) and 12 (Theale), due to start from 7 May 2024.
- M20 between junctions 3 (West Malling) and 5 (Aylesford), due to start from 22 May 2024.
- M27 between junctions 4 (Southampton) and 11 (Fareham), due to start during summer 2024.

Please be aware we do our utmost to maintain these dates, however dates are subject to change, and it may take a few weeks before the roadworks appear as preparatory work is completed. We will regularly publish information about the upgrade and the roadworks on our website at <https://nationalhighways.co.uk/emergency-areas>.

There are major upgrades already underway at junctions 10 and 28 of the M25, as well as regular roadworks for maintenance and renewals. We know just how busy this section of the motorway network is and are working tirelessly to coordinate all this work

closely and keep disruption to an absolute minimum. You can find out more about these projects, including a series of planned weekend closures on the M25 junction 10 project on their webpages:

<https://nationalhighways.co.uk/our-roads/south-east/m25-junction-10/>

<https://nationalhighways.co.uk/our-roads/south-east/m25-junction-28-improvements/>

We are in close contact with local authorities through coordinated collaborative meetings to minimise the impact of roadworks as much as possible.

To carry out the work safely, lane one (the left lane) on the four-lane motorways listed, will be closed throughout construction. Lanes two, three and four will remain open with a 50mph speed limit in place. Existing emergency areas through roadworks will remain open and a free recovery service will be in place throughout the roadworks.

The traffic management for the working areas will be installed overnight when the traffic flows are quieter. We always do our best to minimise disruption and we apologise in advance for any inconvenience these works may cause.

The new emergency area work will mainly be carried out Mondays to Fridays from 7am to 7pm. There will be occasions when we need to close lanes, slip roads or the carriageway between junctions for construction activities and deliveries to the work sites, but this will be overnight and at weekends when traffic flows are at their lowest. Should there be a need to close overnight there will be clearly signed diversion routes in place.

Please do plan your journeys and check before you travel via: Road closure report – National Highways. Emergency areas provide a place to stop in an emergency if drivers cannot exit the motorway or stop at a motorway service area. They are clearly signed at regular intervals along the motorway and have bright orange road surfaces to help identify them. At 100 metres long, they have plenty of space for even the largest lorry plus a recovery vehicle and they are equipped with emergency telephones linking directly to our control rooms to get help on the way quickly. You can find out more about what to do if your vehicle breaks down on the motorway here:

<https://nationalhighways.co.uk/road-safety/breakdowns>.

This investment in extra emergency areas, along with technology like stopped vehicle detection, more signs, and clear advice about all lane running motorways online and an updated Highway Code, will help road users feel safe and be safer on our roads.

Through all the work we are doing we are determined to further improve public confidence in driving on our motorways, and to continue to build and operate one of the safest and best performing road networks in the world. For more information you can follow National Highways @highwaysseast and <https://www.facebook.com/HighwaysSEast>. Please re-share our posts and information on your channels, to help increase awareness about the work with your audiences. You can visit Driving on the motorways - National Highways for more details on what to do in the event of an emergency, and how to use an emergency area. I hope you find this update useful. Please do not hesitate to contact me if you have any questions or the project team directly on EAretrofit@nationalhighways.co.uk or by calling: National Highways customer contact centre on 0300 123 5000.

Yours sincerely

Felicity Clayton
National Emergency Area Project Sponsor

SGN
Gas Network Upgrade – A26 Hadlow Road East, Tonbridge

We're preparing to carry out essential gas network upgrades in the Hadlow Road East area of Tonbridge. This work will ensure a continued safe and reliable supply of gas is delivered to nearby homes and businesses. This is part of our 30-year programme of work to replace our old mains, reaching the end of their useful lives, with new, reliable plastic pipe.

Our contractor, WCB Utilities, who are completing this project on our behalf, will be starting work in Hadlow Road East in the week beginning 15 April.

To ensure everyone's safety, we'll need to use traffic management while we have excavations open in the following roads. Our work will be carried out in phases.

Phase 1: A26 Hadlow Road East: We'll be using temporary traffic lights, working from outside number 219 to the junction with Hadlow Stair. As we move along the road, we'll also need to close Cranford Road, Hadlow Road East Service Road, Barclay Avenue, and Estridge Way at their junctions with the A26.

Phase 2: Old Hadlow Road: We'll be working along the full length of the road. We'll need to close Old Hadlow Road around our worksite. As we move along the road, we'll also need to close Stair Road at its junction with Old Hadlow Road.

Phase 3: A26 Cornwallis Avenue/Hadlow Road: We'll be using temporary traffic lights, working from the junction of Estridge Way to the junction with Higham Lane. As we move along the road, we'll also need to close Higham Lane at its junction with the A26.

We recognise this is a traffic sensitive location, so for work along the A26, we'll be working extended hours and manually controlling the traffic lights from 7am to 7pm.

Following further consultation with Kent Council and local stakeholders, to reduce disruption to pupils travelling to school for GCSE examinations, we've agreed to suspend work on Hadlow Road from 13 May. We'll return to complete this work when the examination period is over in late June.

Signed diversions will be in place for affected motorists where roads are closed. Access will be maintained for residents and businesses.

We understand roadworks can be frustrating. However, the new plastic pipe has a lifespan of 80 years. This means that once our work is done, Tonbridge residents and businesses will be able to enjoy the benefits of a safe and reliable supply of gas for many years to come.

Have a question, or something you'd like to let us know about? We're here to help. Please visit our website for details on ways to contact us: <https://www.sgn.co.uk/Contact-SGN>



The Kentish Rifleman

Dunk's Green, TN11 9RU 01732 810727

Born in the 1500s, our traditional family run pub is open daily from 11.30am. By the cosy fire or out in the beer garden, we offer home-made food, local beers, a lovely selection of wines and spirits and a friendly atmosphere. Please book your table on 01732 810727 or on our website.

We look forward to seeing you soon.

www.thekentishrifleman.co.uk

02/25)

WEST PECKHAM ART & CRAFT EXHIBITION

Sunday 26th and Monday 27th May 10 - 4pm

Painting, drawing, photography, sculpture, glass, ceramics, carpentry, ironmongery & more, by local artists and craftspeople

West Peckham Village Hall ME18 5JJ

Free entry: over 10 exhibitors - homemade refreshments

For more information follow Facebook page: West Peckham online



Call 01732 810378 to
find out more

Join us for a coffee morning

5 June, 4 August & 19 September - 10am

We're always looking for new volunteers to share their love of Ightham Mote and the North Kent Portfolio with visitors.

We are holding open Coffee Mornings for people who are looking to volunteer in the future for any number of volunteering roles at Ightham Mote.

Just drop us an email or give us call to let us know you are coming along.

Can't make any of those dates? No Problem! Just give us a call to start your volunteering journey today.

Call us on **01732 810378** or email us at
IghthamMoteVolunteering@nationaltrust.org.uk





Discover Artistry at Falconhurst Barn, Markbeeceh

Join us for an exclusive art experience nestled in the serene ambiance of Falconhurst, a traditional organic farming estate, and witness the enchanting works of five talented local artists, each weaving their unique narrative through expressive styles and vibrant palettes.

Exhibition Details

- **Need to know:** 1st - 16th June, 9am - 5pm daily, except for early close on Friday 14th and Saturday 15th June at 3pm. Complimentary admission.
- **Location:** The Barn at Falconhurst, Markbeeceh, TN8 5NR.
- **Meet the artists:** dates on artists' profiles within the Art in June guide.
- **Stay connected:** updates on the Art in June and artists' Instagram and Facebook pages.

Featured Artists

Anthony Lawman, Mary McCarten, Dione McKenna, Michael Roberts, and Lisa Ryszkowska unveil a diverse collection of stunning landscapes and city scenes, beautiful wildlife and abstracts, and exquisite glass, making for an enticing and colourful exhibition.

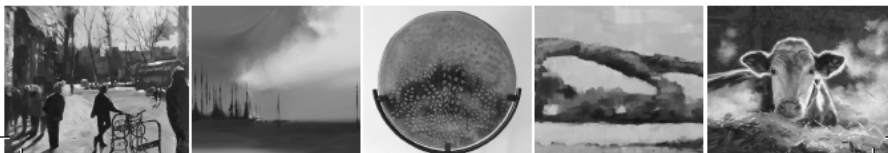
Special Events

- **Private View (1st June, 6pm - 8pm):** an intimate look at the collection. Refreshments served.
- **Midsummer Tea Party (9th June, all day):** featuring new artwork additions.

RSVP at michaeltroberts2@gmail.com by Wednesday 29th May to confirm your attendance.

Nestled just a brief journey from the iconic Hever Castle, make it a day of artistic exploration and natural beauty. Immerse yourself in Falconhurst's magical walled garden or find solace by the sanctuary lake with its abundance of dragonflies and butterflies – perfect for picnics adorned with delicacies from the farm shop. Visit Falconhurst on: www.falconhurst.co.uk

Please come and meet the artists at The Barn at Falconhurst, where art meets nature.



Shipbourne Village Hall Registered Charity No 1074519

The Hall can be hired for £15 per hour with a minimum of 4 hours (£80.00).

It has an attractive secure garden with a good gate that can be closed. Inside there is wheelchair access through the rear door, a well-appointed kitchen, the main hall and an adjoining side room plus all usual facilities.

For Village Hall **enquiries and bookings** please call 07762 241720 or email shipbourne.villagehall@gmail.com

Further details can be found on the Shipbourne website www.shipbourne.com



Grumpy Painters
Painter & Decorators
PM Gladman & Son

March House
Five Oak Green Road
Five Oak Green
Tonbridge, Kent
TN12 6TJ
07885 201765 / 01892 834507
grumpypainter@hotmail.co.uk

Fully Insured with Public Liability
Over 30 Years of Experience

USED STAMPS FOR THE R.N.I.B

I would like to thank everyone who has left used postage stamps at the back of the Church. It has taken over a year to collect sufficient stamps to weigh a total in excess of 1 kilo, but I have now managed to achieve this. 1 kilo of stamps should raise £20 for the RNIB, so I think it is a worthwhile thing to do.

So please keep collecting for me.

Jenny Porter

THE WEATHER IN MARCH

The average day temp. was 16.6°C, the average night temp. was 5.1°C, the highest day was Thursday 14th with 23.0°C, the lowest night was Sunday 3rd with -2.5°C, the total rainfall was 131mm, the 2nd highest in the last 30 years – last year being the highest March with 144mm (my records). The average over the last 30 years was 60.1mm, the highest year being March 2023 with 144mm and the lowest being March 1997 with 17mm.

Lionel Stielow



**PLAXTOL PEST
AND WILDLIFE
MANAGEMENT**

Ciaran Payne
07368 605762

INFO@PLAXTOLPEST.CO.UK
WWW.PLAXTOLPEST.CO.UK

02/25)

FROM YOUR LOCAL MP

I am determined to make sure our community remains a great place to live, while also making sure that we have better services and value for money. It is a privilege to serve Shipbourne and since 2015 I have always fought the corner of everyone locally, to ensure we have better services and value for money.

To help me in doing that it is always important that I know your views on what you can be improved in Shipbourne. To allow me to be able to do this I am running a survey which has, and still is, being delivered across our community to randomly selected households. However, that doesn't stop those of you who haven't received one from letting me know what you think. You can find a link to the survey on my website www.tomtugendhat.org.uk, or if you don't have access to the internet or a computer, please do still let me know your thoughts on what you think my priorities need to be. You can write to me or call my office via the information below.

No matter how detailed, please do take the time to let me know what you think so that I can continue to best represent all of your interests, the more responses the better so please do share this with your family, friends, and neighbours.

Tom Tugendhat

E-mail – tom.tugendhat.mp@parliament.uk

Phone – 01732 441563

Facebook, Twitter and Instagram - @TomTugendhat

Address – 130 Vale Road, Tonbridge, Kent, TN9 1SP

JUNE NEWSLETTER

Please send any articles and adverts for the June Newsletter by **15th May 2024**.

A digital version of the Newsletter is also uploaded on www.shipbourne.com.

Please email articles to lindsay_miles@btinternet.com or call 01732 810439.

MAY AT SHIPBOURNE FARMERS MARKET **(Local produce made/grown by Local producers)**

GIVING TO CHARITY

Did you realise that every year the Farmers' Market gives any surplus we make to food related charities? This means that when you shop at the Farmers Market not only are you purchasing quality local produce and supporting local Producers but you are helping various charities. This financial year, because of the extra money raised via the Michel Roux dinner held in May last year, we are able to give much more than normal. The recipients include Chatham and Nourish Food Banks, Practical Action (providing agricultural solutions to smallholders around the world) and Growing Hope, (which trains and equips churches, families and individuals in Mozambique to produce food for their own survival). It is run by Janet Pythian of Plaxtol so has a very local connection.



MAY AT THE MARKET

We are now really seeing the effect of longer days with the appearance of one of the country's seasonal treats – asparagus. Asparagus is at its best when picked and cooked within hours, (something easily achievable when bought locally at the market, unlike offerings from the supermarket). Make the most of the distinctive flavour by serving simply steamed with melted butter, griddled with shaved Winterdale Shaw cheese (recently awarded silver in the Bath & West British Cheese Awards) and a simple vinaigrette. It also goes well with bacon and ham products, mint, new potatoes, and toasted almonds.

Look out for early tender little English new potatoes and early summer leaves such as spinach, watercress and lettuces. Make the most of green outdoor rhubarb this month in crumbles, pies and fools. By the end of the month the earliest gooseberries should be available. Pair them up with delicate fragrant elderflowers. Just add a head or two of creamy white flowers (pick away from roads or sprayed fields and shake to remove bugs) to the gooseberries for a few minutes as they cook, then lift out and discard. The distinctive flavour will remain for crumbles, cakes, fools or creamy desserts such as crème brûlées and panna cotta.

For fish-eaters, sea trout is one of the season's great treats – smaller fish make a lovely meal for one. Lemon sole, cod, halibut and sea

bass are all good at this time of year and shellfish fans should keep an eye out for razor clams and cockles.

For meat-eaters, locally reared beef and pork will be at its most succulent as the grazing starts to green up. Now is the time to splash out on steaks, chops and fillets and use them simply cooked – grilled, stir fried or griddle cooked for lighter meals.

COOKERY CORNER

ASPARAGUS SOUP

Preparation time: 25 minutes / serves 4

Ingredients

- 25g (1oz) butter
- 2 large shallots, finely chopped
- 600g (21oz) asparagus, finely chopped from *Watts Farms*
- 750ml (25fl oz) hot vegetable stock
- Freshly ground black pepper
- 4 tbsp double cream

Method

1. Heat the butter in a saucepan over a medium heat. Add the shallots and cook for five minutes, until softened but not browned.
2. Add the asparagus and cook for another two minutes.
3. Add the stock and bring to the boil.
4. Season, to taste, with freshly ground black pepper and reduce the heat to simmer for five to seven minutes until the asparagus is cooked through.
5. Add the cream and blend with a hand blender until smooth.
6. Serve with sourdough bread from *Halstead Bakery*

SHIPBOURNE CLASSIFIEDS

Simple Domestic and Personal Advertisements, up to four lines, are free to Newsletter readers. This free category includes items for sale or wanted, baby-sitting, dog walking, domestic needs etc. **To ensure Shipbourne Classifieds is kept up to date, each domestic/personal advertisement will be published in the Newsletter for three months and then removed unless requested otherwise.**

Business Advertisements up to four lines are charged at £1 per monthly issue or £10 for a whole year of 12 issues Also available are up to half-page display advertisements, charged at £10 per monthly issue, or £100 for a full year of 12 issues.

All revenue raised from Shipbourne Classifieds goes towards St Giles and the printing costs of the Newsletter.

Disclaimer: Please note that the St Giles and Shipbourne Newsletter cannot be held responsible for the quality of the goods or services advertised in the Newsletter.

JOANNE LOUISE BEAUTY - Offering Gel Nails, builder gel, ELIM pedicures and LVL lashes from my home studio in Shipbourne. I am fully insured and accredited, offering evening and Sunday appointments. Keep an eye on my Instagram for updates @joannelouisebeauty_ For any questions or to book an appointment I can be contacted on 07894054015 or email joanne@joannelouisebeauty.co.uk (02/25)

FOOT CARE PODIATRIST/CHIROPODIST at my clinic in central Hildenborough. Gentle and effective care for your feet. Alice Neale MRCPod BSC Hons HCPC registered. Contact telephone 01732 832524 or text 07951949015 (02/25)

ORIGINALS IN PENCIL: Local artist applying bespoke art to interior design for homes and businesses. I love to create the unique, the unusual, the talking piece of any room and the best gifts. Visit www.originalsinpencil.co.uk to see a selection of my recent projects or contact me on victoria@originalsinpencil.co.uk or 07711 038484. (02/25)

MARVELLOUS MEN BUILDING AND PROPERTY MAINTENANCE: We do all types of building work and construction and refurbishment kitchens, bathrooms, extensions, loft conversions, painting and decorating, plumbing, electrics to garden and landscape work and much more. Please don't hesitate to contact us on 07887 511411 or 07478 739947 (02/25)

HAIR BY SHARON - Mobile hairdresser, for prices or to make an appointment please call 01732 773043 (02/25)

SALLY OSBORNE - ELECTRICIAN: NAPIT Part P approved. All domestic electrical work undertaken. To arrange a free quote please contact me on 07710 443079 or email salvioz@blueyonder.co.uk (02/25)

DAVID ROWE Plumbing & Heating, a reliable engineer for all your domestic requirements including: boiler installation, servicing and repairs, full heating systems, radiators, hot water cylinders, power-flushing, gas fires, gas cookers, bathrooms. Please contact David, 07715266311 or email droweph@virginmedia.com (02/25)

LOCAL WASP NEST TREATMENT: Fast, efficient, reliable. Andy Wasp 07833 558773 (02/25)



**FOLLOW SHIPBOURNE ON FACEBOOK FOR VILLAGE NEWS,
INFORMATION AND EVENTS**
[@shipbournevillage](https://www.facebook.com/shipbournevillage)

